

Synchronization and Power Sharing for Droop-Controlled Inverters in Islanded Microgrids [★]

John W. Simpson-Porco, Florian Dörfler, Francesco Bullo ^a

^aCenter for Control, Dynamical Systems, and Computation, University of California, Santa Barbara, Santa Barbara, CA 93106, USA

Abstract

Motivated by the recent and growing interest in smart grid technology, we study the operation of DC/AC inverters in an inductive microgrid. We show that a network of loads and DC/AC inverters equipped with power-frequency droop controllers can be cast as a Kuramoto model of phase-coupled oscillators. This novel description, together with results from the theory of coupled oscillators, allows us to characterize the behavior of the network of inverters and loads. Specifically, we provide a necessary and sufficient condition for the existence of a synchronized solution that is unique and locally exponentially stable. We present a selection of controller gains leading to a desirable sharing of power among the inverters, and specify the set of loads which can be serviced without violating given actuation constraints. Moreover, we propose a distributed integral controller based on averaging algorithms, which dynamically regulates the system frequency in the presence of a time-varying load. Remarkably, this distributed-averaging integral controller has the additional property that it preserves the power sharing properties of the primary droop controller. Our results hold without assumptions on identical line characteristics or voltage magnitudes.

Key words: inverters; power-system control, smart power applications, synchronization, coupled oscillators, Kuramoto model, distributed control.

1 Introduction

A *microgrid* is a low-voltage electrical network, heterogeneously composed of distributed generation, storage, load, and managed autonomously from the larger primary network. Microgrids are able to connect to the wide area electric power system (WAEPS) through a Point of Common Coupling (PCC), but are also able to “island” themselves and operate independently. Energy generation within a microgrid can be highly heterogeneous, any many these sources generate either variable frequency AC power (wind) or DC power (solar), and are therefore interfaced with a synchronous AC microgrid via power electronic devices called DC/AC (or AC/AC) *power converters*, or simply *inverters*. In islanded operation, inverters are operated as *voltage sourced inverters* (VSIs), which act much like ideal voltage sources. It is through these VSIs that actions must be taken to en-

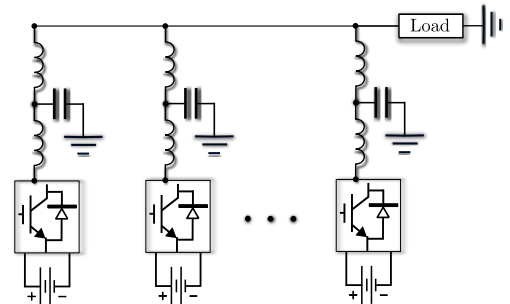


Fig. 1. Schematic of inverters operating in parallel.

sure synchronization, security, power balance and load sharing in the network.

Literature Review: A key topic of interest within the microgrid community is that of accurately sharing both active and reactive power among a bank of inverters operated *in parallel*. Such a network is depicted in Figure 1, in which each inverter transmits power directly to a common load. Although several control architectures have been proposed to solve this problem, the so-called “droop” controllers have attracted the most attention, as they are ostensibly decentralized. The original refer-

[★] Corresponding author J. W. Simpson-Porco.

Email addresses:

johnwsimpsonporco@engineering.ucsb.edu (John W. Simpson-Porco), dorfler@engineering.ucsb.edu (Florian Dörfler), bullo@engineering.ucsb.edu (Francesco Bullo).

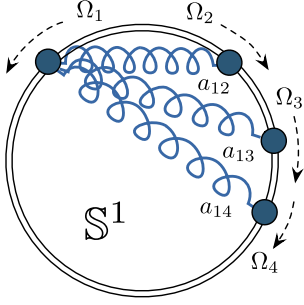


Fig. 2. Mechanical analog of a Kuramoto oscillator network. The particles have no inertia and do not collide with another.

ence for this methodology is [6], where Chandorkar *et al.* introduce what we will refer to as the *conventional droop controller*. For inductive lines, the droop controller attempts to emulate the behavior of a classical synchronous generator by imposing an inverse relation at each inverter between frequency and active power injection [18]. Under other network conditions, the controller takes different forms [16,33,35]. Some representative references for the basic methodology are [30,2,21,22,20] and [17]. Small-signal stability analyses for two inverters operating in parallel are presented under various assumptions in [10,11,23,25] and the references therein. The recent work [34] highlights some drawbacks of the conventional droop method. Distributed controllers based on tools from synchronous generator theory and multi-agent systems have also been proposed for synchronization and power sharing. See [26,27] for a broad overview, and [35,29,4,32] for various works.

Another set of literature relevant to our investigation is that pertaining to synchronization of phase-coupled oscillators, in particular the classic and celebrated *Kuramoto model*. A generalization of this model considers $n \geq 2$ coupled oscillators, each represented by a phase $\theta_i \in \mathbb{S}^1$ (the unit circle) and a natural frequency $\Omega_i \in \mathbb{R}$. The system of coupled oscillators obeys the dynamics

$$D_i \dot{\theta}_i = \Omega_i - \sum_{j=1}^n a_{ij} \sin(\theta_i - \theta_j), \quad i \in \{1, \dots, n\}, \quad (1)$$

where $a_{ij} \geq 0$ is the coupling strength between the oscillators i and j and D_i is the time constant of the i^{th} oscillator. Figure 2 shows a mechanical analog of (1), in which the oscillators can be visualized as a group of n kinematic particles, constrained to rotate around the unit circle. The particles rotate with preferred directions and speeds specified by the natural frequencies Ω_i , and are connected together by elastic springs of stiffness a_{ij} . The rich dynamic behavior of the system (1) arises from the competition between the tendency of each oscillator to align with its natural frequency Ω_i , and the synchronization enforcing coupling $a_{ij} \sin(\theta_i - \theta_j)$ with its neighbors. We refer to the recent surveys [1,28,12] for applications and theoretic results.

The Frequency-Droop Method: The *frequency-droop method* constitutes one half of the conventional droop method. For inductive lines, the controller balances the active power demands in the network by instantaneously changing the frequency ω_i of the voltage signal at the i^{th} inverter according to

$$\omega_i = \omega^* - n_i(P_{e,i} - P_i^*), \quad (2)$$

where ω^* is a rated frequency, $P_{e,i}$ is the active electrical power injection at bus i , and P_i^* is the nominal active power injection. The parameter $n_i > 0$ is referred to as the *droop coefficient*.

Limitations of the Literature: Despite forming the foundation for the operation of parallel VSIs, the frequency-droop control law (2) has never been subject to a nonlinear analysis [34]. No conditions have been presented under which the controller (2) leads the network to a synchronous steady state, nor have any statements been made about the convergence rate to such a steady state should one exist. Stability results that are presented rely on linearization for the special case of two inverters, and sometimes come packaged with extraneous assumptions [22,17]. No guarantees are given in terms of performance. Schemes for power sharing based on ideas from multi-agent systems often deal directly with coordinating the real and reactive power injections of the distributed generators, and assume implicitly that a low level controller is bridging the gap between the true network physics and the desired power injections. Moreover, conventional schemes for frequency restoration typically rely on a combination of local integral action and separation of time scales, and are generally unable to maintain an appropriate sharing of power among the inverters (see Sections 4–5).

Contributions: The contributions of this paper are four-fold. First, we begin with our key observation that the equations governing a microgrid under the frequency-droop controller can be equivalently cast as a generalized Kuramoto model of the form (1). We present a necessary and sufficient condition for the existence of a locally exponentially stable and unique synchronized solution of the closed-loop, and provide a lower bound on the exponential convergence rate. We also state a robustified version of our stability condition which relaxes the assumption of fixed voltage magnitudes and admittances. Second, we show rigorously—and without assumptions on large output impedances or identical voltage magnitudes—that if the droop coefficients are selected proportionally, then power is shared among the units proportionally. We provide explicit bounds on the set of serviceable loads. Third, we propose a distributed “secondary” integral controller for frequency stabilization. Through the use of a distributed-averaging algorithm, the proposed controller dynamically regulates the network frequency to a nominal value, while preserving the proportional power sharing properties of the

frequency-droop controller. We show that this controller is locally stabilizing, without relying on the classic assumption of a time-scale separation between the droop and integral control loops. Fourth and finally, all results presented extend past the classic case of a parallel topology of inverters and hold for generic acyclic interconnections of inverters and loads.

Paper Organization: The remainder of this section introduces some notation and reviews some fundamental material from algebraic graph theory, power systems and coupled oscillator theory. In Section 2 we motivate the mathematical models used throughout the rest of the work. In Section 3 we perform a nonlinear stability analysis of the frequency-droop controller. Section 4 details results on power sharing and steady state bounds on power injections. In Section 5 we present and analyze our distributed-averaging integral controller. Finally, Section 7 concludes the paper and presents directions for future work.

Preliminaries and Notation:

Sets, vectors and functions: Given a finite set \mathcal{V} , let $|\mathcal{V}|$ denote its cardinality. Given an index set \mathcal{I} and a real valued 1D-array $\{x_1, \dots, x_{|\mathcal{I}|}\}$, $\text{diag}(\{x_i\}_{i \in \mathcal{I}}) \in \mathbb{R}^{|\mathcal{I}| \times |\mathcal{I}|}$ is the associated diagonal matrix. We denote the $n \times n$ identity matrix by I_n . Let $\mathbf{1}_n$ and $\mathbf{0}_n$ be the n -dimensional vectors of all ones and all zeros. For $z \in \mathbb{R}^n$, define $z^\perp \triangleq \{x \in \mathbb{R}^n \mid z^T x = 0\}$ and $\sin(z) \triangleq (\sin(z_1), \dots, \sin(z_n))^T \in \mathbb{R}^n$.

Algebraic graph theory: We denote by $G(\mathcal{V}, \mathcal{E}, A)$ an undirected and weighted graph, where \mathcal{V} is the set of nodes, $\mathcal{E} \subseteq \mathcal{V} \times \mathcal{V}$ is the set of edges, and $A \in \mathbb{R}^{|\mathcal{V}| \times |\mathcal{V}|}$ is the *adjacency matrix*. If a number $\ell \in \{1, \dots, |\mathcal{E}|\}$ and an arbitrary direction is assigned to each edge $\{i, j\} \in \mathcal{E}$, the *node-edge incidence matrix* $B \in \mathbb{R}^{|\mathcal{V}| \times |\mathcal{E}|}$ is defined component-wise as $B_{k\ell} = 1$ if node k is the sink node of edge ℓ and as $B_{k\ell} = -1$ if node k is the source node of edge ℓ , with all other elements being zero. For $x \in \mathbb{R}^{|\mathcal{V}|}$, $B^T x \in \mathbb{R}^{|\mathcal{E}|}$ is the vector with components $x_i - x_j$, with $\{i, j\} \in \mathcal{E}$. If $\text{diag}(\{a_{ij}\}_{\{i,j\} \in \mathcal{E}}) \in \mathbb{R}^{|\mathcal{E}| \times |\mathcal{E}|}$ is the diagonal matrix of edge weights, then the *Laplacian matrix* is given by $L = B \text{diag}(\{a_{ij}\}_{\{i,j\} \in \mathcal{E}}) B^T$. If the graph is connected, then $\ker(B^T) = \ker(L) = \text{span}(\mathbf{1}_{|\mathcal{V}|})$, and $\ker(B) = \emptyset$ for acyclic graphs. In this case, for every $x \in \mathbf{1}_{|\mathcal{V}|}^\perp$, that is, $\sum_{i \in \mathcal{V}} x_i = 0$, there exists a unique $\xi \in \mathbb{R}^{|\mathcal{E}|}$ satisfying Kirchoff's Current Law (KCL) $x = B\xi$ [3,9]. The vector x is interpreted as nodal injections, with ξ being the associated edge flows. The Laplacian matrix L is positive semidefinite with eigenvalues $0 = \lambda_1(L) < \lambda_2(L) \leq \dots \leq \lambda_{|\mathcal{V}|}(L)$. We denote the *Moore-Penrose inverse* of L by L^\dagger , and we recall from [13] the identity $LL^\dagger = L^\dagger L = I_{|\mathcal{V}|} - \frac{1}{|\mathcal{V}|} \mathbf{1}_{|\mathcal{V}|} \mathbf{1}_{|\mathcal{V}|}^T$.

Geometry on the n -torus: The set \mathbb{S}^1 denotes the *unit circle*, an *angle* is a point $\theta \in \mathbb{S}^1$, and an *arc* is a con-

nected subset of \mathbb{S}^1 . With a slight abuse of notation, let $|\theta_1 - \theta_2|$ denote the *geodesic distance* between two angles $\theta_1, \theta_2 \in \mathbb{S}^1$. The n -torus $\mathbb{T}^n = \mathbb{S}^1 \times \dots \times \mathbb{S}^1$ is the Cartesian product of n unit circles. For $\gamma \in [0, \pi/2[$ and a given graph $G(\mathcal{V}, \mathcal{E}, \cdot)$, let $\Delta_G(\gamma) = \{\theta \in \mathbb{T}^{|\mathcal{V}|} : \max_{\{i,j\} \in \mathcal{E}} |\theta_i - \theta_j| \leq \gamma\}$ be the closed set of angle arrays $\theta = (\theta_1, \dots, \theta_n)$ with neighboring angles θ_i and θ_j , $\{i, j\} \in \mathcal{E}$ no further than γ apart.

Synchronization: Consider the first order phase-coupled oscillator model (1) defined on a graph $G(\mathcal{V}, \mathcal{E}, \cdot)$. A solution $\theta : \mathbb{R}_{\geq 0} \rightarrow \mathbb{T}^{|\mathcal{V}|}$ of (1) is said to be *synchronized* if (a) there exists a constant $\omega_{\text{sync}} \in \mathbb{R}$ such that for each $t \geq 0$, $\dot{\theta}(t) = \omega_{\text{sync}} \mathbf{1}_{|\mathcal{V}|}$ and (b) there exists a $\gamma \in [0, \pi/2[$ such that $\theta(t) \in \Delta_G(\gamma)$ for each $t \geq 0$.

AC Power Flow: Consider a synchronous AC electrical network with n nodes, purely inductive admittance matrix $Y \in j\mathbb{R}^{n \times n}$, nodal voltage magnitudes $E_i > 0$, and nodal voltage phase angles $\theta_i \in \mathbb{S}^1$. The active electrical power $P_{e,i} \in \mathbb{R}$ injected into the network at node $i \in \{1, \dots, n\}$ is given by [18]

$$P_{e,i} = \sum_{j=1}^n E_i E_j |Y_{ij}| \sin(\theta_i - \theta_j). \quad (3)$$

2 Problem Setup for Microgrid Analysis

Inverter Modeling: The standard approximation in the microgrid literature—and the one we adopt hereafter—is to model an inverter as a *controlled voltage source behind a reactance*. This model is widely adopted among experimentalists in the microgrid field. Further modeling explanation can be found in [15,35,31] and the references therein.

Islanded Microgrid Modeling: Figure 3 depicts an islanded microgrid containing both inverters and loads. Such an interconnection could arise by design, or spontaneously in a distribution network after an islanding event. An appropriate model is that of a weighted graph $G(\mathcal{V}, \mathcal{E}, A)$ with $|\mathcal{V}| = n$ nodes. We consider the case of inductive lines, and denote by $Y \in j\mathbb{R}^{n \times n}$ the bus admittance matrix of the network.* We partition the set of nodes as $\mathcal{V} = \{\mathcal{V}_L, \mathcal{V}_I\}$, corresponding to loads and inverters. For $\{i, j\} \in \mathcal{E}$, Y_{ij} is the admittance of the edge between nodes i and j . The output impedance of the inverter can be controlled to be purely susceptive, and we absorb its value into the line susceptances $-\text{Im}(Y_{ij}) < 0$, $\{i, j\} \in \mathcal{E}$. To each node $i \in \{1, \dots, n\}$ we assign a harmonic voltage signal of the form $E_i(t) = E_i \cos(\omega^* t + \theta_i)$, where $\omega^* > 0$ is the nominal angular frequency, $E_i > 0$

* In some applications the inverter output impedance can be controlled to be highly inductive and dominate over any resistive effects in the network [16]. In others, the control law (2) is inappropriate; see [16,33,35] and Section 7.

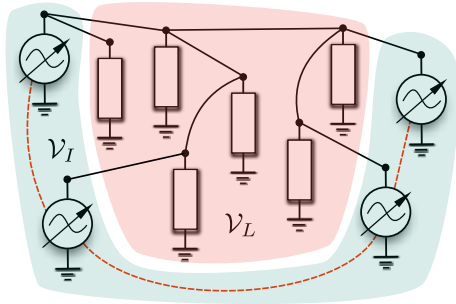


Fig. 3. Schematic illustration of a microgrid, with four inverters (nodes \mathcal{V}_I) supplying six loads (nodes \mathcal{V}_L) through an acyclic interconnection. The dotted lines between inverters represent communication links, which will be used exclusively in Section 5.

is the voltage amplitude, and $\theta_i \in \mathbb{S}^1$ is the voltage phase angle. We assume each inverter has precise measurements of its rolling time-averaged active power injection $P_{e,i}(t)$ and of its frequency $\omega_i(t)$, see [15] for details regarding this estimation. The active power injection of each inverter into the network is restricted to the interval $[0, \bar{P}_i]$ where \bar{P}_i is the *rating* of inverter $i \in \mathcal{V}_I$. For the special case of a *parallel* interconnection of inverters, as in Figure 1, we will let $\mathcal{V}_L = \{0\}$ and $\mathcal{V}_I = \{1, \dots, n-1\}$.

3 Analysis of Frequency-Droop Control

We now connect the frequency-droop controller (2) to a network of first-order phase-coupled oscillators of the form (1). We restrict our attention to active power flows, and assume the voltage magnitudes E_i are fixed at every bus. To begin, note that by defining $D_i \triangleq n_i^{-1}$ and by writing $\omega_i = \omega^* + \dot{\theta}_i$, we can equivalently write the frequency-droop controller (2) as

$$D_i \dot{\theta}_i = P_i^* - P_{e,i}, \quad i \in \mathcal{V}_I, \quad (4)$$

where $P_i^* \in [0, \bar{P}_i]$ is a selected nominal value.[†] Note that $\dot{\theta}_i$ is the *deviation* of the frequency at inverter i from the nominal frequency ω^* . Using the active load flow equations (3), the droop controller (4) becomes

$$D_i \dot{\theta}_i = P_i^* - \sum_{j=1}^n E_i E_j |Y_{ij}| \sin(\theta_i - \theta_j), \quad i \in \mathcal{V}_I. \quad (5)$$

For a constant power loads $\{P_i^*\}_{i \in \mathcal{V}_L}$ we must also satisfy the $|\mathcal{V}_L|$ power balance equations

$$0 = P_i^* - \sum_{j=1}^n E_i E_j |Y_{ij}| \sin(\theta_i - \theta_j), \quad i \in \mathcal{V}_L. \quad (6)$$

[†] We make no assumptions regarding the selection of droop coefficients. See Section 4 for more on choice of coefficients.

If due to failure or energy shortage an inverter $i \in \mathcal{V}_I$ is unable to supply power support to the network, we formally set $D_i = P_i^* = 0$, which reduces (5) to a load as in (6). If the droop-controlled system (5)–(6) reaches synchronization, then we can — without loss of generality — transform our coordinates to a *rotating frame of reference*, where the synchronization frequency is zero and the study of synchronization reduces to the study of equilibria. In this case, it is known that the equilibrium point of interest for the differential-algebraic system shares the same stability properties as the same equilibrium of the corresponding singularly perturbed system [7, Theorem 13.1], where the constant power loads P_i^* are replaced by a frequency-dependent loads $P_i^* - D_i \dot{\theta}_i$, for $i \in \mathcal{V}_L$ and for some sufficiently small $D_i > 0$. We can now identify a singularly perturbed droop-controlled system of the form (5)–(6) with a network of Kuramoto oscillators described by (1) and arrive at the following insightful relation.

Lemma 1 (Equivalence of Perturbed Droop-Controlled System and Kuramoto Model). *The following two models are equivalent:*

- (i) *The singularly perturbed droop-controlled network (5)–(6), with frequency-dependent loads $P_i^* - D_i \dot{\theta}_i$ with $D_i > 0$ instead of constant power loads $P_i^* \in \mathbb{R}$ ($i \in \mathcal{V}_L$), droop coefficients $n_i = 1/D_i > 0$, nominal power injections $P_i^* \in \mathbb{R}$ ($i \in \mathcal{V}_I$), nodal voltage phases $\theta_i \in \mathbb{S}^1$, nodal voltages magnitudes $E_i > 0$, and bus admittance matrix $Y \in \mathbb{J}\mathbb{R}^{n \times n}$.*
- (ii) *The generalized Kuramoto model (1), with time constants $D_i > 0$, natural frequencies $\Omega_i \in \mathbb{R}$, phase angles $\theta_i \in \mathbb{S}^1$ and coupling weights $a_{ij} > 0$.*

Moreover, the parametric quantities of the two models are related via $P_i^* = \Omega_i$ and $E_i E_j |Y_{ij}| = a_{ij}$.

In light of Lemma 1 and for notational simplicity, we define the matrix of time constants (inverse droop coefficients) $D \triangleq \text{diag}(\mathbf{0}_{|\mathcal{V}_L|}, \{D_i\}_{i \in \mathcal{V}_I})$, the vector of loads and nominal power injections $P^* \triangleq (P_1^*, \dots, P_n^*)^T$, and for $\{i, j\} \in \mathcal{E}$ we write $a_{ij} \triangleq E_i E_j |Y_{ij}|$. The droop-controlled system (5)–(6) then reads in vector notation as

$$D \dot{\theta} = P^* - B \text{diag}(\{a_{ij}\}_{\{i,j\} \in \mathcal{E}}) \mathbf{sin}(B^T \theta), \quad (7)$$

where $\theta \triangleq (\theta_1, \dots, \theta_n)^T$ and $B \in \mathbb{R}^{n \times |\mathcal{E}|}$ is the node-edge incidence matrix of the underlying graph $G(\mathcal{V}, \mathcal{E}, A)$. A natural question now arises: under what conditions on the power injections, network topology, admittances, and droop coefficients does the differential-algebraic closed-loop system (5)–(6) possess a stable, synchronous solution?

Theorem 2 (Existence and Stability of Sync'd Solution). *Consider the frequency-droop controlled system*

(5)–(6) defined on an acyclic network with node-edge incidence matrix B . Define the scaled power imbalance ω_{avg} by $\omega_{\text{avg}} \triangleq (\sum_{i=1}^n P_i^*) / (\sum_{i \in \mathcal{V}_I} D_i) \in \mathbb{R}$, and let $\xi \in \mathbb{R}^{|\mathcal{E}|}$ be the unique vector of edge power flows satisfying KCL, given implicitly by $P^* - \omega_{\text{avg}} D \mathbf{1}_n = B\xi$. The following two statements are equivalent:

- (i) **Synchronization:** There exists an arc length $\gamma \in [0, \pi/2[$ such that the closed-loop system (5)–(6) possess a locally exponentially stable and unique synchronized solution $t \mapsto \theta^*(t) \in \Delta_G(\gamma)$ for all $t \geq 0$;
- (ii) **Flow Feasibility:** The power flow is feasible, i.e.,

$$\Gamma \triangleq \|\text{diag}(\{a_{ij}\}_{\{i,j\} \in \mathcal{E}})^{-1} \xi\|_\infty < 1. \quad (8)$$

If the equivalent statements (i) and (ii) hold true, then the quantities $\Gamma \in [0, 1[$ and $\gamma \in [0, \pi/2[$ are related uniquely via $\Gamma = \sin(\gamma)$, and the following statements hold:

- a) **Explicit Synchronized Solution:** The synchronized solution satisfies $\theta^*(t) = \theta_0 + (\omega_{\text{sync}} t \mathbf{1}_n) \pmod{2\pi}$ for some $\theta_0 \in \Delta_G(\gamma)$, where $\omega_{\text{sync}} = \omega_{\text{avg}}$, and the synchronized angular differences satisfy $\mathbf{sin}(B^T \theta^*) = \text{diag}(\{a_{ij}\}_{\{i,j\} \in \mathcal{E}}) \xi$;
- b) **Explicit Synchronization Rate:** The local exponential synchronization rate is no worse than

$$\lambda \triangleq \frac{\lambda_2(L)}{\max_{i \in \mathcal{V}_I} D_i} \sqrt{1 - \Gamma^2}, \quad (9)$$

where $L = B \text{diag}(\{a_{ij}\}_{\{i,j\} \in \mathcal{E}}) B^T$ is the Laplacian matrix of the network with weights $\{a_{ij}\}_{\{i,j\} \in \mathcal{E}}$.

Remark 3 (Physical Interpretation) From the droop controller (4), it holds that $P^* - \omega_{\text{sync}} D \mathbf{1}_n \in \mathbf{1}_n^\perp$ is the vector of steady state power injections. The power injections therefore satisfy the Kirchoff current law, and $\xi \in \mathbb{R}^{|\mathcal{E}|}$ is the associated vector of power flows along edges [9]. Physically, the parametric condition (8) therefore states that the active power flow along each edge be feasible, i.e., less than the physical maximum $a_{ij} = E_i E_j |Y_{ij}|$. While the necessity of this condition seems plausible, its sufficiency is perhaps surprising. Theorem 2 shows that equilibrium power flows are invariant under constant scaling of all droop coefficients, as overall scaling of D appears inversely in ω_{avg} . Although grid stress varies with specific application and loading, the condition (8) is typically satisfied with a large margin of safety – a practical upper bound for γ would be 10° .

PROOF. To begin, note that if a solution $t \mapsto \theta(t)$ to the system (7) is frequency synchronized, then by definition there exists an $\omega_{\text{sync}} \in \mathbb{R}$ such that $\dot{\theta}(t) = \omega_{\text{sync}} \mathbf{1}_n$ for all $t \geq 0$. Summing over all equations (5)–(6) gives $\omega_{\text{sync}} = \omega_{\text{avg}}$. Without loss of generality, we

can consider the *auxiliary system* associated with (7) defined by

$$D\dot{\theta} = \tilde{P} - B \text{diag}(\{a_{ij}\}_{\{i,j\} \in \mathcal{E}}) \mathbf{sin}(B^T \theta), \quad (10)$$

where $\tilde{P}_i = P_i^*$ for $i \in \mathcal{V}_L$ and $\tilde{P}_i = P_i^* - \omega_{\text{avg}} D_i$ for $i \in \mathcal{V}_I$. Since $\tilde{P} \in \mathbf{1}_n^\perp$, system (10) has the property that $\tilde{\omega}_{\text{avg}} = 0$ and represents the dynamics (7) in a reference frame rotating at an angular frequency ω_{avg} . Thus, frequency synchronized solutions of (7) correspond one-to-one with *equilibrium* points of the system (10). Given the Laplacian matrix $L = B \text{diag}(\{a_{ij}\}_{\{i,j\} \in \mathcal{E}}) B^T$, (10) can be equivalently rewritten in the insightful form

$$D\dot{\theta} = B \text{diag}(\{a_{ij}\}_{\{i,j\} \in \mathcal{E}}) \cdot (B^T L^\dagger \tilde{P} - \mathbf{sin}(B^T \theta)). \quad (11)$$

Here, we have made use of the facts that $LL^\dagger = L^\dagger L = I_n - \frac{1}{n} \mathbf{1}_n \mathbf{1}_n^T$ and $\tilde{P} \in \mathbf{1}_n^\perp$. Since $\ker(B) = \emptyset$, equilibria of (11) must satisfy $B^T L^\dagger \tilde{P} = B^T L^\dagger B \xi = \mathbf{sin}(B^T \theta)$. We claim that $B^T L^\dagger B = \text{diag}(\{a_{ij}\}_{\{i,j\} \in \mathcal{E}})^{-1}$. To see this, define $X \triangleq B^T L^\dagger B$ and notice that $X \text{diag}(\{a_{ij}\}_{\{i,j\} \in \mathcal{E}}) B^T = B^T L^\dagger (B \text{diag}(\{a_{ij}\}_{\{i,j\} \in \mathcal{E}}) B^T) = B^T L^\dagger L = B^T$. Since $\ker(B) = \emptyset$, it therefore holds that $X \text{diag}(\{a_{ij}\}_{\{i,j\} \in \mathcal{E}}) = I_{|\mathcal{E}|}$ and the result follows. Hence, equilibria of (11) satisfy

$$\text{diag}(\{a_{ij}\}_{\{i,j\} \in \mathcal{E}})^{-1} \xi = \mathbf{sin}(B^T \theta). \quad (12)$$

Equation (12) is uniquely solvable for $\theta^* \in \Delta(\gamma)$, $\gamma \in [0, \pi/2[$, if and only if $\Gamma \triangleq \max_{\{i,j\} \in \mathcal{E}} (\xi_{ij}/a_{ij}) \leq \sin(\gamma)$. Since the right-hand side of the condition $\Gamma \leq \sin(\gamma)$ is a concave and monotonically increasing function of $\gamma \in [0, \pi/2[$, there exists an equilibrium $\theta^* \in \Delta_G(\gamma)$ for some $\gamma \in [0, \pi/2[$ if and only if the condition $\Gamma \leq \sin(\gamma)$ is true with the strict inequality sign for $\gamma = \pi/2$. This leads immediately to the claimed condition $\Gamma < 1$. In this case, the explicit equilibrium angles are then obtained from the n decoupled equations (12). See [14, Theorems 1, 2(G1)] for additional information. Local exponential stability of the equilibrium $\theta^* \in \Delta(\gamma)$ is established by recalling the equivalence between the index-1 differential-algebraic system (11) and an associated reduced set of pure differential equations (see also the proof of (b)). In summary, the above discussion shows the equivalence of (i) and (ii) and statement (a).

To show statement (b), consider the linearization of the dynamics (10) about the equilibrium $\theta^* \in \Delta(\gamma)$ given by

$$\frac{d}{dt} \begin{bmatrix} \mathbf{0}_{|\mathcal{V}_L|} \\ \Delta \theta_I \end{bmatrix} = - \begin{bmatrix} I_{|\mathcal{V}_L|} & \mathbf{0} \\ \mathbf{0} & D_I^{-1} \end{bmatrix} \begin{bmatrix} L_{LL} & L_{LI} \\ L_{IL} & L_{II} \end{bmatrix} \begin{bmatrix} \Delta \theta_L \\ \Delta \theta_I \end{bmatrix},$$

where we have partitioned the matrix $L(\theta^*) = B \text{diag}(\{a_{ij} \cos(\theta_i^* - \theta_j^*)\}_{\{i,j\} \in \mathcal{E}}) B^T$ according to load

nodes \mathcal{V}_L and inverter nodes \mathcal{V}_I , and defined $D_I \triangleq \text{diag}(\{D_i\}_{i \in \mathcal{V}_I})$. Since $\theta^* \in \Delta_G(\gamma)$, the matrix $L(\theta^*)$ is a Laplacian and thus positive semidefinite with a simple eigenvalue at zero corresponding to rotational invariance of the dynamics under a uniform shift of all angles. It can be easily verified that the upper left block L_{LL} of $L(\theta^*)$ is nonsingular [13], or equivalently, θ^* is a *regular* equilibrium point. Solving the set of $|\mathcal{V}_L|$ algebraic equations and substituting into the dynamics for $\Delta\theta_I$, we obtain $d(\Delta\theta_I)/dt = -D_I^{-1}L_{\text{red}}(\theta^*)\Delta\theta_I$, where $L_{\text{red}} \triangleq L_{II} - L_{IL}L_{LL}^{-1}L_{LI}$. The matrix $L_{\text{red}}(\theta^*) \in \mathbb{R}^{|\mathcal{V}_I| \times |\mathcal{V}_I|}$ is also a Laplacian matrix, and therefore shares the same properties as $L(\theta^*)$ [13]. Thus, it is the *second* smallest eigenvalue of $D_I^{-1}L_{\text{red}}(\theta^*)$ which bounds the convergence rate of the linearization, and hence the local convergence rate of the dynamics (10). A simple bound on $\lambda_2(D_I^{-1}L_{\text{red}}(\theta^*))$ can be obtained via the Courant-Fischer Theorem [24]. For $x \in \mathbf{1}_{|\mathcal{V}_I|}^\perp$, let $y = D_I^{1/2}x$, and note that $x^T L_{\text{red}}(\theta^*)x / (x^T D_I x) = y^T D_I^{-1/2} L_{\text{red}}(\theta^*) D_I^{-1/2} y / (y^T y)$. Thus, $y \in (D_I^{-1/2} \mathbf{1}_{|\mathcal{V}_I|})^\perp$ is an eigenvector of $D_I^{-1/2} L_{\text{red}}(\theta^*) D_I^{-1/2}$ with eigenvalue $\mu \in \mathbb{R}$ if and only if $x = D_I^{-1/2} y$ is an eigenvector of $D_I^{-1} L_{\text{red}}(\theta^*)$ with eigenvalue μ . For $y \neq \mathbf{0}_{|\mathcal{V}_I|}$, we obtain

$$\begin{aligned} \lambda_2(D_I^{-1}L_{\text{red}}(\theta^*)) &= \min_{y \in (D_I^{-1/2} \mathbf{1}_{|\mathcal{V}_I|})^\perp} \frac{y^T D_I^{-1/2} L_{\text{red}}(\theta^*) D_I^{-1/2} y}{y^T y} \\ &= \min_{x \in \mathbf{1}_{|\mathcal{V}_I|}^\perp} \frac{x^T L_{\text{red}}(\theta^*) x}{x^T D_I x} \geq \frac{1}{\max_{i \in \mathcal{V}_I} D_i} \min_{x \in \mathbf{1}_{|\mathcal{V}_I|}^\perp} \frac{x^T L_{\text{red}}(\theta^*) x}{x^T x} \\ &\geq \frac{\lambda_2(L_{\text{red}}(\theta^*))}{\max_{i \in \mathcal{V}_I} D_i} \geq \frac{\lambda_2(L(\theta^*))}{\max_{i \in \mathcal{V}_I} D_i}, \end{aligned}$$

where we have made use of the *spectral interlacing* property of Schur complements [13] in the final inequality. Since $\theta^* \in \Delta_G(\gamma)$, the eigenvalue $\lambda_2(L(\theta^*))$ can be further bounded as $\lambda_2(L(\theta^*)) \geq \lambda_2(L) \cos(\gamma)$, where $L = B \text{diag}(\{a_{ij}\}_{\{i,j\} \in \mathcal{E}}) B^T$ is the Laplacian with weights $\{a_{ij}\}_{\{i,j\} \in \mathcal{E}}$. This fact and the identity $\cos(\gamma) = \cos(\sin^{-1}(\Gamma)) = \sqrt{1 - \Gamma^2}$ complete the proof. \square

An analogous stability result for inverters operating in parallel now follows as a corollary.

Corollary 4 (Existence and Stability of Sync'd Solution for Parallel Inverters). *Consider a parallel interconnection of inverters, as depicted in Figure 1. The following two statements are equivalent:*

- (i) **Synchronization:** *There exists an arc length $\gamma \in [0, \pi/2]$ such that the closed-loop system (7) possess a locally exponentially stable and unique synchronized solution $t \mapsto \theta^*(t) \in \Delta_G(\gamma)$ for all $t \geq 0$;*

(ii) **Power Injection Feasibility:**

$$\Gamma \triangleq \max_{i \in \mathcal{V}_I} |(P_i^* - \omega_{\text{avg}} D_i) / a_{i0}| < 1. \quad (13)$$

PROOF. For the parallel topology of Figure 1 there is one load fed by $n - 1$ inverters, and the incidence matrix of the graph $G(\mathcal{V}, \mathcal{E}, A)$ takes the form $B = [-\mathbf{1}_{n-1} \ I_{n-1}]^T$. Letting \tilde{P} be as in the previous proof, we note that ξ is given uniquely as $\xi = (B^T B)^{-1} B^T \tilde{P}$. In this case, a set of straightforward but tedious matrix calculations reduce condition (8) to condition (13). \square

Our analysis so far has been based on the assumption that each term $a_{ij} \triangleq E_i E_j |Y_{ij}|$ is a *constant and known* parameter for all $\{i, j\} \in \mathcal{E}$. In a realistic power system, both effective line susceptances magnitudes and voltage magnitudes are dynamically adjusted by additional controllers. Our analysis so far has been based on the assumption that each term $a_{ij} \triangleq E_i E_j |Y_{ij}|$ is a *constant and known* parameter for all $\{i, j\} \in \mathcal{E}$. In a realistic power system, both effective line susceptances magnitudes and voltage magnitudes are dynamically adjusted by additional controllers. The following result states that as long as these controllers can regulate the effective susceptances and nodal voltages above prespecified lower bounds $|Y_{ij}|$ and E_j , the stability results of Theorem 2 go through with little modification.

Corollary 5 (Robustified Stability Condition). *Consider the frequency-droop controlled system (5)–(6). Assume that the nodal voltage magnitudes satisfy $E_i > \underline{E}_i > 0$ for all $i \in \{1, \dots, n\}$, and that the line susceptance magnitudes satisfy $|Y_{ij}| \geq \underline{|Y_{ij}|} > 0$ for all $\{i, j\} \in \mathcal{E}$. For $\{i, j\} \in \mathcal{E}$, define $\underline{a}_{ij} \triangleq \underline{E}_i \underline{E}_j \underline{|Y_{ij}|}$. The following two statements are equivalent:*

- (i) **Robust Synchronization:** *For all possible voltage magnitudes $E_i > \underline{E}_i$ and line susceptance magnitudes $|Y_{ij}| \geq \underline{|Y_{ij}|}$, there exists an arc length $\gamma \in [0, \pi/2[$ such that the closed-loop system (5)–(6) possess a locally exponentially stable and unique synchronized solution $t \mapsto \theta^*(t) \in \Delta_G(\gamma)$ for all $t \geq 0$; and*
- (ii) **Worst Case Flow Feasibility:** *The active power flow is feasible for the worst case voltage and line susceptances magnitudes, that is,*

$$\|\text{diag}(\{\underline{a}_{ij}\}_{\{i,j\} \in \mathcal{E}})^{-1} \xi\|_\infty < 1. \quad (14)$$

PROOF. The result follows by noting that a_{ij} (resp. \underline{a}_{ij}) appears exclusively in the *denominator* of (8) (resp. (14)), and that the vector $\xi \in \mathbb{R}^{|\mathcal{E}|}$ defined in Theorem 2 does not depend on the voltages or line susceptances. \square

Finally, regarding the assumption of purely inductive lines, we note that since the eigenvalues of a matrix are continuous functions of its entries, the exponential stability property established in Theorem 2 is robust, and the stable synchronous solution persists in the presence of sufficiently small line conductances [8]. This robustness towards lossy lines is also illustrated in the simulation study of Section 6.

4 Power Sharing and Actuation Constraints

While Theorem 2 gives the necessary and sufficient condition for the existence of a synchronized solution to the closed-loop system (5)–(6), it offers no immediate guidance on how to select the control parameters P_i^* and D_i to satisfy the actuation constraint $P_{e,i} \in [0, \bar{P}_i]$. The following definition gives the proper criteria for selection.

Definition 6 (Proportional Droop Coefficients). *The droop coefficients are selected proportionally if $P_i^*/D_i = P_j^*/D_j$ and $P_i^*/\bar{P}_i = P_j^*/\bar{P}_j$ for all $i, j \in \mathcal{V}_I$.*

Theorem 7 (Power Flow Constraints and Power Sharing). *Consider a synchronized solution of the frequency-droop controlled system (5)–(6), and let the droop coefficients be selected proportionally. Define the total load $P_L \triangleq \sum_{i \in \mathcal{V}_L} P_i^*$. The following two statements are equivalent:*

- (i) **Injection Constraints:** $0 \leq P_{e,i} \leq \bar{P}_i, \forall i \in \mathcal{V}_I$;
- (ii) **Load Constraint:** $-\sum_{j \in \mathcal{V}_I} \bar{P}_j \leq P_L \leq 0$.

Moreover, the inverters share the total load P_L proportionally according to their power ratings, that is, $P_{e,i}/\bar{P}_i = P_{e,j}/\bar{P}_j$, for each $i, j \in \mathcal{V}_I$.

PROOF. From (4), the steady state active power injection at each inverter is given by $P_{e,i} = P_i^* - \omega_{\text{sync}} D_i$. By imposing $P_{e,i} \geq 0$ for each $i \in \mathcal{V}_I$, substituting the expression for ω_{sync} , and rearranging terms, we obtain, for each $i \in \mathcal{V}_I$,

$$P_{e,i} = P_i^* - \left(\frac{P_L + \sum_{j \in \mathcal{V}_I} P_j^*}{\sum_{j \in \mathcal{V}_I} D_j} \right) D_i \geq 0$$

$$\iff P_L \leq - \sum_{j \in \mathcal{V}_I} \left(P_j^* - \frac{P_i^*}{D_i} D_j \right) = 0,$$

where in the final equality we have used Definition 6. Along with the observation that $P_{e,i} \geq 0$ if and only if $P_{e,j} \geq 0$ ($i, j \in \mathcal{V}_I$), this suffices to show that $0 \leq P_{e,i}$ for each $i \in \mathcal{V}_I$ if and only if $P_L \leq 0$. If we now impose for $i \in \mathcal{V}_I$ that $P_{e,i} \leq \bar{P}_i$ and again use the expression for

ω_{sync} along with Definition 6, a similar calculation yields

$$P_{e,i} \leq \bar{P}_i \iff P_L \geq - \frac{\bar{P}_i}{P_i^*} \sum_{j \in \mathcal{V}_I} P_j^* = - \sum_{j \in \mathcal{V}_I} \bar{P}_j.$$

Along with the observation that $P_{e,i} \leq \bar{P}_i$ if and only if $P_{e,j} \leq \bar{P}_j$ ($i, j \in \mathcal{V}_I$), this shows that $P_{e,i} \leq \bar{P}_i$ for each $i \in \mathcal{V}_I$ if and only if the total load P_L satisfies the above inequality. In summary, we have demonstrated two if and only if inequalities, which when taken together show the equivalence of (i) and (ii). To show the final statement, note that the fraction of the rated power capacity injected by the i^{th} inverter is given by

$$\frac{P_{e,i}}{\bar{P}_i} = \frac{P_i^* - \omega_{\text{sync}} D_i}{\bar{P}_i} = \frac{P_j^* - \omega_{\text{sync}} D_j}{\bar{P}_j} = \frac{P_{e,j}}{\bar{P}_j},$$

for each $j \in \mathcal{V}_I$. This completes the proof. \square

Power sharing results for parallel inverters supplying a single load follow as a corollary of Theorem 7, with $P_L = P_0^*$. Note that the coefficients D_i must be selected with global knowledge. The droop method therefore requires a centralized design for power sharing despite its decentralized implementation. We remark that Theorem 7 holds independently of the network voltage magnitudes and line admittances.

5 Distributed PI Control in Microgrids

As is evident from the expression for ω_{sync} in Theorem 2, the frequency-droop method typically leads to a deviation of the steady state operating frequency $\omega^* + \omega_{\text{sync}}$ from the nominal value ω^* . Again in light of Theorem 2, it is clear that modifying the nominal active power injection P_i^* via the transformation $P_i^* \rightarrow P_i^* - \omega_{\text{sync}} D_i$ (for $i \in \mathcal{V}_I$) in the controller (5) will yield zero steady state frequency deviation (c.f. the auxiliary system (10) with $\tilde{\omega}_{\text{sync}} = 0$). Unfortunately, the information to calculate ω_{sync} is not available locally at each inverter. As originally proposed in [6], after the frequency of each inverter has converged to ω_{sync} , a slower, “secondary” control loop can be used locally at each inverter. Each local secondary controller slowly modifies the nominal power injection P_i^* until the network frequency deviation is zero. This procedure implicitly assumes that the measured frequency value $\hat{\theta}_i(t)$ is a good approximation of ω_{sync} , and relies on a separation of time-scales between the fast, synchronization-enforcing primary droop controller and the slower secondary integral controller. This methodology is employed in [6,19,17]. For large droop coefficients D_i , this approach can be particularly slow (Theorem 2 (b)), with this slow response leading to an inability of the method to dynamically regulate the network frequency in the presence of a time-varying

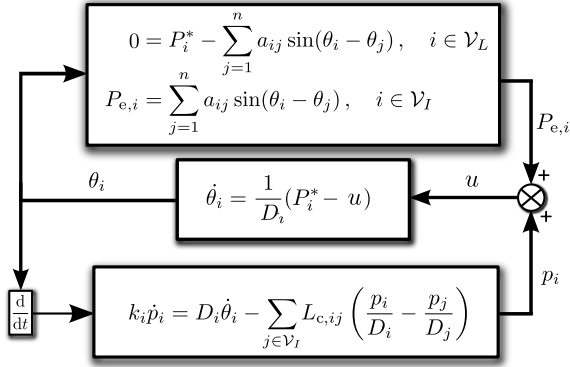


Fig. 4. Feedback diagram for the DAPI controller. By itself, the upper control loop is the droop controller (4).

load. Moreover, these decentralized integral controllers destroy the power sharing properties established by the primary droop controller.

In what follows, we pursue an alternative scheme for frequency restoration which does not implicitly rely on a separation of time-scales as in [6,19,17]. Assuming the existence of a communication network among the inverters, we expand on the conventional frequency-droop design (2) and propose the *distributed-averaging proportional-integral (DAPI) controller*

$$D_i \dot{\theta}_i = P_i^* - p_i - P_{e,i}, \quad i \in \mathcal{V}_I, \quad (15)$$

$$k_i \dot{p}_i = D_i \dot{\theta}_i - \sum_{j \in \mathcal{V}_I} L_{c,ij} \left(\frac{p_i}{D_i} - \frac{p_j}{D_j} \right), \quad i \in \mathcal{V}_I, \quad (16)$$

where $p_i \in \mathbb{R}$ is an auxiliary power variable and $k_i > 0$ is a gain, for each $i \in \mathcal{V}_I$.[†] The matrix $L_c \in \mathbb{R}^{|\mathcal{V}_I| \times |\mathcal{V}_I|}$ is the Laplacian matrix corresponding to a weighted, undirected and connected *communication graph* $G_c(\mathcal{V}_I, \mathcal{E}_c, A_c)$ between the inverters, see Figure 3. The DAPI controller (15)–(16) is depicted in Figure 4, and will be shown to have the following two key properties. First of all, the controller is able to quickly regulate the network frequency under large and rapid variations in load. Secondly, the controller accomplishes this regulation while *preserving* the power sharing properties of the primary droop controller (4).

The closed-loop dynamics resulting from the DAPI con-

[†] The presented results extend to discrete time and asynchronous communication, see [5].

troller (15)–(16) are given by

$$0 = P_i^* - \sum_{j=1}^n a_{ij} \sin(\theta_i - \theta_j), \quad i \in \mathcal{V}_L, \quad (17)$$

$$D_i \dot{\theta}_i = P_i^* - p_i - \sum_{j=1}^n a_{ij} \sin(\theta_i - \theta_j), \quad i \in \mathcal{V}_I, \quad (18)$$

$$k_i \dot{p}_i = P_i^* - p_i - \sum_{j=1}^n a_{ij} \sin(\theta_i - \theta_j) - \sum_{j \in \mathcal{V}_I} L_{c,ij} \left(\frac{p_i}{D_i} - \frac{p_j}{D_j} \right), \quad i \in \mathcal{V}_I. \quad (19)$$

The following theorem (see Appendix A for the proof) establishes local stability of the desired equilibrium of (17)–(19) as well as the power sharing properties of the DAPI controller.

Theorem 8 (Stability of DAPI-Controlled Network). *Consider an acyclic network of droop-controlled inverters and loads in which the inverters can communicate through the weighted graph G_c , as described by the closed-loop system (17)–(19) with parameters $P_i^* \in [0, \bar{P}_i]$, $D_i > 0$ and $k_i > 0$ for $i \in \mathcal{V}_I$, and connected communication Laplacian $L_c \in \mathbb{R}^{|\mathcal{V}_I| \times |\mathcal{V}_I|}$. The following two statements are equivalent:*

- (i) **Stability of Droop Controller:** *The droop control stability condition (8) holds;*
- (ii) **Stability of DAPI Controller:** *There exists an arc length $\gamma \in [0, \pi/2[$ such that the system (18)–(19) possess a locally exponentially stable and unique equilibrium $(\theta^*, p^*) \in \Delta_G(\gamma) \times \mathbb{R}^{|\mathcal{V}_I|}$.*

If the equivalent statements (i) and (ii) hold true, then the unique equilibrium is given as in Theorem 2 (ii), along with $p_i^* = D_i \omega_{\text{avg}}$ for $i \in \mathcal{V}_I$. Moreover, if the droop coefficients are selected proportionally, then the DAPI controller preserves the proportional power sharing property of the primary droop controller.

Note that Theorem 8 asserts the exponential stability of an *equilibrium* of the closed-loop (17)–(19), and hence, a synchronization frequency ω_{sync} of zero. The network therefore synchronizes to the nominal frequency ω^* .

6 Simulation Study

We now illustrate the performance of our proposed DAPI controller (15)–(16) and its robustness to unmodeled voltage dynamics (see Corollary 5) and lossy lines in a simulation scenario. We consider two inverters operating in parallel and supplying a variable load. The voltage magnitude at each inverter is controlled via the *voltage-droop* method

$$E_i = E_i^* - m_i (Q_{e,i} - Q_i^*), \quad i \in \{1, 2\}, \quad (20)$$

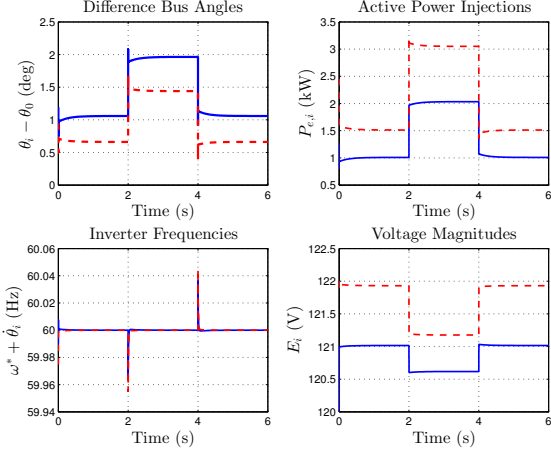


Fig. 5. DAPI controlled closed-loop (17)–(19) for two inverters supplying a load which changes at $t \in \{2s, 4s\}$.

Table 1
Parameter values for simulation in Figure 5.
The choice of resistances corresponds to a
resistance/reactance ratio of one half.

Parameter	Symbol	Value
Nom. Frequency	$\omega_i^*/2\pi$	60 Hz
Nom. Voltages	E_i^*	[120, 122] V
Output/Line Induc.	L_i	[0.7, 0.5] mH
Output/Line Resist.	R_i	[0.14, 0.1] Ω
Inv. Ratings (P)	$P_i^* = \bar{P}_i$	[2, 3] kW
Inv. Ratings (Q)	Q_i^*	[1, 1] kvar
Load (P)	$P_0^*(t)$	$P_0^* \in \{-2.5, -5\}$ kW
Load (Q)	$Q_0^*(t)$	$Q_0^* \in \{-1, -2\}$ kvar
ω -Droop Coeff.	D_i	$[4, 6] \times 10^3$ W \cdot s
E -Droop Coef.	m_i	$[1, 1] \times 10^{-3} \frac{V}{V}$
Sec. Droop Coeff.	k_i	$10^{-6} \frac{V}{s}$
Comm. Graph	G_{comm}	Two nodes, one edge
Comm. Laplacian	L_c	$(1000 \text{ Ws}) \cdot \begin{bmatrix} 1 & -1 \\ -1 & 1 \end{bmatrix}$

where $E_i^* > 0$ (resp. $Q_i^* \in \mathbb{R}$) is the nominal voltage magnitude (resp. nominal reactive power injection) at inverter $i \in \{1, 2\}$, $m_i > 0$ is the voltage-droop coefficient, and $Q_{e,i} \in \mathbb{R}$ is the reactive power injection (see [18] for details on reactive power). The simulation parameters are reported in Table 1. Note the effectiveness of the proposed DAPI controller (15)–(16) in quickly regulating the system frequency. The spikes in local frequency displayed in Figure 5 (c) are due to the rapid change in load, and can be further suppressed by increasing the gains k_i . This additional degree of freedom allows for a selection of primary droop coefficients D_i much smaller than is typical in the literature (10^3 W \cdot s, compared to roughly 10^5 W \cdot s), allowing the power injections (Figure 5 (b)) to respond quickly during transients.

7 Conclusions

We have examined the problems of synchronization, power sharing, and secondary control among droop-controlled inverters by leveraging tools from the theory of coupled oscillators, along with ideas from classical power systems and multi-agent systems. An issue not addressed in this work is a nonlinear analysis of reactive power sharing, as an analysis of the voltage-droop method (20) which yields simple and physically meaningful algebraic conditions for the existence of a solution is difficult to perform. Moreover, in the case of strongly mixed line conditions $\text{Im}(Y_{ij}) \simeq \text{Re}(Y_{ij})$, neither of the control laws (2) nor (20) are appropriate. A provably functional control strategy for general interconnections and line conditions is an open and exciting problem.

Acknowledgements

This work was supported in part by the National Science Foundation NSF CNS-1135819 and by the National Science and Engineering Research Council of Canada. We wish to thank H. Bouattour, Q.-C. Zhong and J. M. Guerrero for their insightful comments and suggestions.

References

- [1] A. Arenas, A. Díaz-Guilera, J. Kurths, Y. Moreno, and C. Zhou. Synchronization in complex networks. *Physics Reports*, 469(3):93–153, 2008.
- [2] S. Barsali, M. Ceraolo, P. Pelacchi, and D. Poli. Control techniques of dispersed generators to improve the continuity of electricity supply. In *IEEE Power Engineering Society Winter Meeting*, pages 789–794, New York, NY, USA, January 2002.
- [3] N. Biggs. Algebraic potential theory on graphs. *Bulletin of the London Mathematical Society*, 29(6):641–683, 1997.
- [4] S. Bolognani and S. Zampieri. A distributed control strategy for reactive power compensation in smart microgrids, 2011. Available at <http://arxiv.org/abs/1106.5626>.
- [5] F. Bullo, J. Cortés, and S. Martínez. *Distributed Control of Robotic Networks*. Princeton University Press, 2009.
- [6] M. C. Chandorkar, D. M. Divan, and R. Adapa. Control of parallel connected inverters in standalone AC supply systems. *IEEE Transactions on Industry Applications*, 29(1):136–143, 1993.
- [7] H.-D. Chiang. *Direct Methods for Stability Analysis of Electric Power Systems*. Wiley, 2011.
- [8] H.-D. Chiang and C. C. Chu. Theoretical foundation of the BCU method for direct stability analysis of network-reduction power system models with small transfer conductances. *IEEE Transactions on Circuits and Systems I: Fundamental Theory and Applications*, 42(5):252–265, 1995.
- [9] L. O. Chua, C. A. Desoer, and E. S. Kuh. *Linear and Nonlinear Circuits*. McGraw-Hill, 1987.
- [10] E. A. A. Coelho, P. C. Cortizo, and P. F. D. Garcia. Small-signal stability for parallel-connected inverters in standalone AC supply systems. *IEEE Transactions on Industry Applications*, 38(2):533–542, 2002.

- [11] M. Dai, M. N. Marwali, J.-W. Jung, and A. Keyhani. Power flow control of a single distributed generation unit with nonlinear local load. In *IEEE Power Systems Conference and Exposition*, pages 398–403, New York, USA, October 2004.
- [12] F. Dörfler and F. Bullo. On the critical coupling for Kuramoto oscillators. *SIAM Journal on Applied Dynamical Systems*, 10(3):1070–1099, 2011.
- [13] F. Dörfler and F. Bullo. Kron reduction of graphs with applications to electrical networks. *IEEE Transactions on Circuits and Systems I: Regular Papers*, 60(1):150–163, 2013.
- [14] F. Dörfler, M. Chertkov, and F. Bullo. Synchronization in complex oscillator networks and smart grids. *Proceedings of the National Academy of Sciences*, 110(6):2005–2010, 2013.
- [15] E. C. Furtado, L. A. Aguirre, and L. A. B. Tôrres. UPS parallel balanced operation without explicit estimation of reactive power – a simpler scheme. *IEEE Transactions on Circuits and Systems II: Express Briefs*, 55(10):1061–1065, 2008.
- [16] J. M. Guerrero, L. GarcíadeVicuna, J. Matas, M. Castilla, and J. Miret. Output impedance design of parallel-connected UPS inverters with wireless load-sharing control. *IEEE Transactions on Industrial Electronics*, 52(4):1126–1135, 2005.
- [17] J. M. Guerrero, J. C. Vasquez, J. Matas, M. Castilla, and L. G. de Vicuna. Control strategy for flexible microgrid based on parallel line-interactive UPS systems. *IEEE Transactions on Industrial Electronics*, 56(3):726–736, 2009.
- [18] P. Kundur. *Power System Stability and Control*. McGraw-Hill, 1994.
- [19] R. Lasseter and P. Piagi. Providing premium power through distributed resources. In *Annual Hawaii Int. Conference on System Sciences*, pages 4042–4051, Maui, HI, USA, January 2000.
- [20] Y. U. Li and C.-N. Kao. An accurate power control strategy for power-electronics-interfaced distributed generation units operating in a low-voltage multibus microgrid. *IEEE Transactions on Power Electronics*, 24(12):2977–2988, 2009.
- [21] J. A. P. Lopes, C. L. Moreira, and A. G. Madureira. Defining control strategies for microgrids islanded operation. *IEEE Transactions on Power Systems*, 21(2):916–924, 2006.
- [22] R. Majumder, A. Ghosh, G. Ledwich, and F. Zare. Power system stability and load sharing in distributed generation. In *Power System Technology and IEEE Power India Conference*, pages 1–6, New Delhi, India, October 2008.
- [23] M. N. Marwali, J.-W. Jung, and A. Keyhani. Stability analysis of load sharing control for distributed generation systems. *IEEE Transactions on Energy Conversion*, 22(3):737–745, 2007.
- [24] C. D. Meyer. *Matrix Analysis and Applied Linear Algebra*. SIAM, 2001.
- [25] Y. Mohamed and E. F. El-Saadany. Adaptive decentralized droop controller to preserve power sharing stability of paralleled inverters in distributed generation microgrids. *IEEE Transactions on Power Electronics*, 23(6):2806–2816, 2008.
- [26] R. Olfati-Saber, J. A. Fax, and R. M. Murray. Consensus and cooperation in networked multi-agent systems. *Proceedings of the IEEE*, 95(1):215–233, 2007.
- [27] W. Ren, R. W. Beard, and E. M. Atkins. Information consensus in multivehicle cooperative control: Collective group behavior through local interaction. *IEEE Control Systems Magazine*, 27(2):71–82, 2007.
- [28] S. H. Strogatz. From Kuramoto to Crawford: Exploring the onset of synchronization in populations of coupled oscillators. *Physica D: Nonlinear Phenomena*, 143(1):1–20, 2000.
- [29] L. A. B. Tôrres, J. P. Hespanha, and J. Moehlis. Power supplies dynamical synchronization without communication. In *IEEE Power & Energy Society General Meeting*, San Diego, CA, USA, July 2012. To appear.
- [30] A. Tuladhar, H. Jin, T. Unger, and K. Mauch. Parallel operation of single phase inverter modules with no control interconnections. In *Applied Power Electronics Conference and Exposition*, pages 94–100, Atlanta, GA, USA, February 1997.
- [31] B. W. Williams. *Power Electronics: Devices, Drivers, Applications and Passive Components*. McGraw-Hill, 1992.
- [32] H. Xin, Z. Qu, J. Seuss, and A. Maknouninejad. A self organizing strategy for power flow control of photovoltaic generators in a distribution network. *IEEE Transactions on Power Electronics*, 26(3):1462–1473, 2011.
- [33] W. Yao, M. Chen, J. Matas, J. M. Guerrero, and Z.-M. Qian. Design and analysis of the droop control method for parallel inverters considering the impact of the complex impedance on the power sharing. *IEEE Transactions on Industrial Electronics*, 58(2):576–588, 2011.
- [34] Q.-C. Zhong. Robust droop controller for accurate proportional load sharing among inverters operated in parallel. *IEEE Transactions on Industrial Electronics*, 60(4):1281–1290, 2013.
- [35] Q.-C. Zhong and T. Hornik. *Control of Power Inverters in Renewable Energy and Smart Grid Integration*. Wiley-IEEE Press, 2013.

A Proof of Theorem 8

Consider the closed-loop (17)–(19) arising from the DAPI controller (15)–(16). We formulate our problem in the error coordinates $\tilde{p}_i(t) \triangleq p_i(t) - D_i\omega_{avg}$, and write (17)–(19) in vector notation as

$$\mathcal{D} \begin{bmatrix} \mathbf{0}_{|\mathcal{V}_L|} \\ \dot{\theta}_I \\ \tilde{p} \end{bmatrix} = \tilde{P} - P_e - \begin{bmatrix} \mathbf{0}_{|\mathcal{V}_L|} \\ \tilde{p} \end{bmatrix}, \quad (\text{A.1})$$

$$K\dot{\tilde{p}} = \tilde{P}_I - P_{e,I} - (I_{|\mathcal{V}_I|} + L_c D_I^{-1})\tilde{p}, \quad (\text{A.2})$$

where we have defined $P_e \triangleq B A \sin(B^T \theta) = (P_{e,L}, P_{e,I})$, $\mathcal{A} \triangleq \text{diag}(\{a_{ij}\}_{\{i,j\} \in \mathcal{E}})$, $\mathcal{D} \triangleq \text{blkdiag}(I_{|\mathcal{V}_L|}, D_I)$, $K \triangleq \text{diag}(\{k_i\}_{i \in \mathcal{V}_I})$ and partitioned the vector of power injections by load and inverter nodes as $\tilde{P} = (\tilde{P}_L, \tilde{P}_I)^T$. Equilibria of (A.1)–(A.2) satisfy

$$\mathbf{0} = \underbrace{\begin{bmatrix} I_{|\mathcal{V}_L|} & \mathbf{0} & \mathbf{0} \\ \mathbf{0} & D_I^{-1} & I_{|\mathcal{V}_I|} \\ \mathbf{0} & I_{|\mathcal{V}_I|} & D_I + L_c \end{bmatrix}}_{Q_1} \underbrace{\begin{bmatrix} I_{|\mathcal{V}_L|} & \mathbf{0} & \mathbf{0} \\ \mathbf{0} & I_{|\mathcal{V}_I|} & \mathbf{0} \\ \mathbf{0} & \mathbf{0} & D_I^{-1} \end{bmatrix}}_{Q_2} \underbrace{\begin{bmatrix} \tilde{P} - P_e \\ -\tilde{p} \end{bmatrix}}_x. \quad (\text{A.3})$$

The positive semidefinite matrix Q_1 has one dimensional kernel spanned by $(\mathbf{0}_{|\mathcal{V}_L|}, D_I \mathbf{1}_{|\mathcal{V}_I|}, -\mathbf{1}_{|\mathcal{V}_I|})$, while Q_2 is

positive definite. Note however that since $\tilde{P} - P_e \in \mathbf{1}_n^\perp$, and $Q_2x = (\tilde{P} - P_e, -D_I^{-1}\tilde{p})$, it holds that $Q_2x \notin \ker(Q_1)$. Thus, (A.3) holds if and only if $x = \mathbf{0}_{n+|\mathcal{V}_I|}$; that is, $\tilde{p} = \tilde{p}^* = \mathbf{0}_{|\mathcal{V}_I|}$ and $\tilde{P} - P_e = \mathbf{0}_n$. Equivalently, from Theorem 2, the latter equation is solvable for a unique (modulo rotational symmetry) value $\theta^* \in \Delta_G(\gamma)$ if and only if the parametric condition (8) holds.

To establish the local exponential stability of the equilibrium (θ^*, \tilde{p}^*) , we linearize the DAE (A.1)–(A.2) about the regular fixed point (θ^*, \tilde{p}^*) and eliminate the resulting algebraic equations, as in the proof of Theorem 2. The Jacobian $J(\theta^*, \tilde{p}^*)$ of the reduced system of ordinary differential equations can then be factored as $J(\theta^*, \tilde{p}^*) = -Z^{-1}X$, where $Z = \text{blkdiag}(I_{|\mathcal{V}_I|}, K)$ and

$$X = \underbrace{\begin{bmatrix} D_I^{-1} & I_{|\mathcal{V}_I|} \\ I_{|\mathcal{V}_I|} & L_c + D_I \end{bmatrix}}_{=X_1=X_1^T} \underbrace{\begin{bmatrix} L_{\text{red}}(\theta^*) & \mathbf{0} \\ \mathbf{0} & D_I^{-1} \end{bmatrix}}_{=X_2=X_2^T}.$$

Thus, the problem of local exponential stability of (θ^*, \tilde{p}^*) reduces to the generalized eigenvalue problem $-X_1X_2v = \lambda Zv$, where $\lambda \in \mathbb{R}$ is an eigenvalue and $v \in \mathbb{R}^{2|\mathcal{V}_I|}$ is the associated eigenvector. We will proceed via a continuity-type argument. Consider momentarily a perturbed version of X_1 , denoted by X_1^ϵ , obtained by adding the matrix $\epsilon I_{|\mathcal{V}_I|}$ to the lower-right block of X_1 , where $\epsilon \geq 0$. Then for every $\epsilon > 0$, X_1^ϵ is positive definite. Defining $y \triangleq Zv$, we can write the generalized eigenvalue problem $X_1^\epsilon X_2v = -\lambda Zv$ as $X_2Z^{-1}y = -\lambda(X_1^\epsilon)^{-1}y$. The matrices on both left and right of this generalized eigenvalue problem are now symmetric, with $X_2Z^{-1} = \text{blkdiag}(L_{\text{red}}, D_I^{-1}K^{-1})$ having a simple eigenvalue at zero corresponding to rotational symmetry. By applying the Courant-Fischer Theorem to this transformed problem, we conclude, for $\epsilon > 0$ and modulo rotational symmetry, that all eigenvalues are real and negative.

Now, consider again the unperturbed case with $\epsilon = 0$. Notice that the matrix X_2 is positive semidefinite with kernel spanned by $(\mathbf{1}_{|\mathcal{V}_I|}, \mathbf{0}_{|\mathcal{V}_I|})$ corresponding to rotational symmetry, while X_1 is positive semidefinite with kernel spanned by $(-D_I\mathbf{1}_{|\mathcal{V}_I|}, \mathbf{1}_{|\mathcal{V}_I|})$. Since $\text{image}(L_{\text{red}}(\theta^*)) = \mathbf{1}_{|\mathcal{V}_I|}^\perp$, $\text{image}(X_2) \cap \ker(X_1) = \{\mathbf{0}_{2|\mathcal{V}_I|}\}$, that is, X_2v is never in the kernel of X_1 . Thus we conclude that $\ker(X_1X_2) = \ker(X_2)$. Now we return to the original eigenvalue problem in the form $X_1X_2v = -\lambda Zv$. Since the eigenvalues of a matrix are continuous functions of the matrix entries, and $\ker(X_1X_2) = \ker(X_2)$, we conclude that the number of negative eigenvalues does not change as $\epsilon \rightarrow 0^+$, and the eigenvalues therefore remain real and negative. Hence, the equilibrium (θ^*, \tilde{p}^*) of the DAE (A.1)–(A.2) is (again, modulo rotational symmetry) locally exponentially stable.

To show the final statement, note from the modified primary controller (15) that the steady state power injection at inverter $i \in \mathcal{V}_I$ is given by $P_{e,i} = P_i^* - p_i(t = \infty) = P_i^* - \omega_{\text{avg}}D_i$, which is exactly the steady state power injection when only the primary droop controller (4) is used. The result then follows from Theorem (7). This completes the proof of Theorem 8. \square